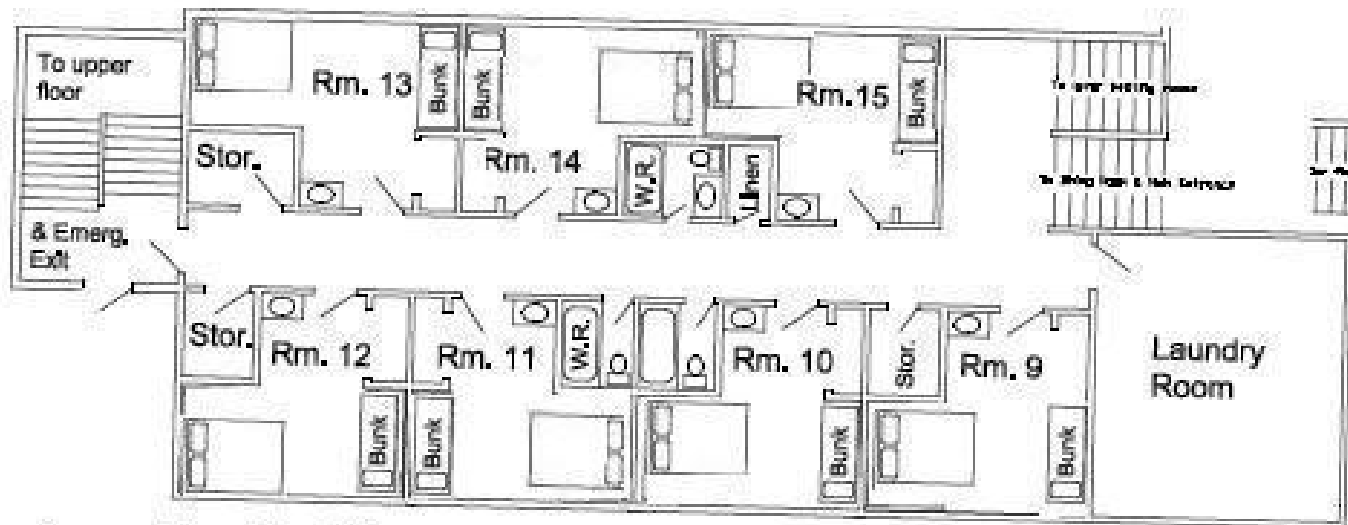
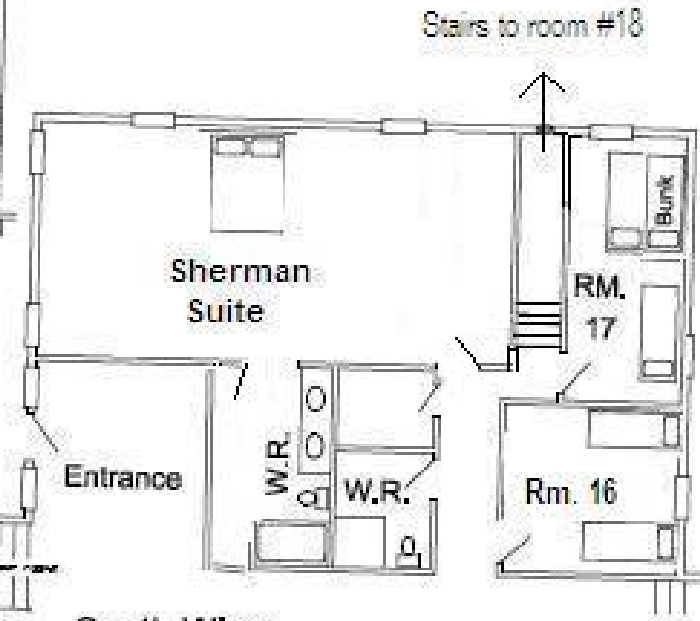


Upper Floor East Wing



Lower Floor East Wing

Room 18 (left) 3 double beds in divided areas and two single beds



South Wing

The basement is a large open floor plan.

Room	Max	Name
1	3	1 _____
		2 _____
		3 _____
2	4	1 _____
		2 _____
		3 _____
		4 _____
3	4	1 _____
		2 _____
		3 _____
		4 _____
4	4	1 _____
		2 _____
		3 _____
		4 _____
5	4	1 _____
		2 _____
		3 _____
		4 _____
6	4	1 _____
		2 _____
		3 _____
		4 _____
7	4	1 _____
		2 _____
		3 _____
		4 _____
8	4	1 _____
		2 _____
		3 _____
		4 _____
9	4	1 _____
		2 _____
		3 _____
		4 _____
10	4	1 _____
		2 _____
		3 _____
		4 _____

Room	Max	Name
11	4	1 _____
		2 _____
		3 _____
		4 _____
12	4	1 _____
		2 _____
		3 _____
		4 _____
13	4	1 _____
		2 _____
		3 _____
		4 _____
14	4	1 _____
		2 _____
		3 _____
		4 _____
15	4	1 _____
		2 _____
		3 _____
		4 _____
16	2	1 _____
		2 _____
17	4	1 _____
		2 _____
		3 _____
		4 _____
18	8	1 _____
		2 _____
		3 _____
		4 _____
		5 _____
		6 _____
		7 _____
		8 _____
Sherman Suite	2	1 _____
		2 _____

Rooms In the Inn

RM #	Type of bed	1 person / room	1 person / bed	Maximum #
# 1	1 Jack & Jill Bunk 1 double	1	2	3
# 2	1 bunk bed 1 double	1	3	4
# 3	1 bunk bed 1 double	1	3	4
# 4	1 bunk bed 1 double	1	3	4
# 5	1 bunk bed 1 double	1	3	4
# 6	1 bunk bed 1 double	1	3	4
# 7	1 bunk bed 1 double	1	3	4
# 8	1 bunk bed 1 double	1	3	4
# 9	1 bunk bed 1 double	1	3	4
# 10	1 bunk bed 1 double	1	3	4
# 11	1 bunk bed 1 double	1	3	4
# 12	1 bunk bed 1 double	1	3	4
# 13	1 bunk bed 1 double	1	3	4
# 14	1 bunk bed 1 double	1	3	4
# 15	1 bunk bed 1 double	1	3	4
#16	2 Singles	1	2	2
# 17	1 Jack & Jill Bunk 1 single	1	3	4
# 18	3 double 2 single	1	5	8
Sherman Suite	1 King	1	1	2

(Subject to Availability and Additional Fee)

	1 person / room	1 person / bed	Maximum
Total:	19	55	75